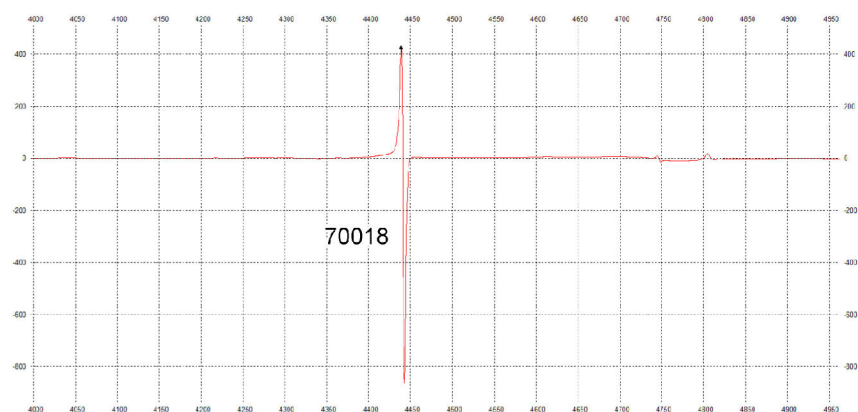
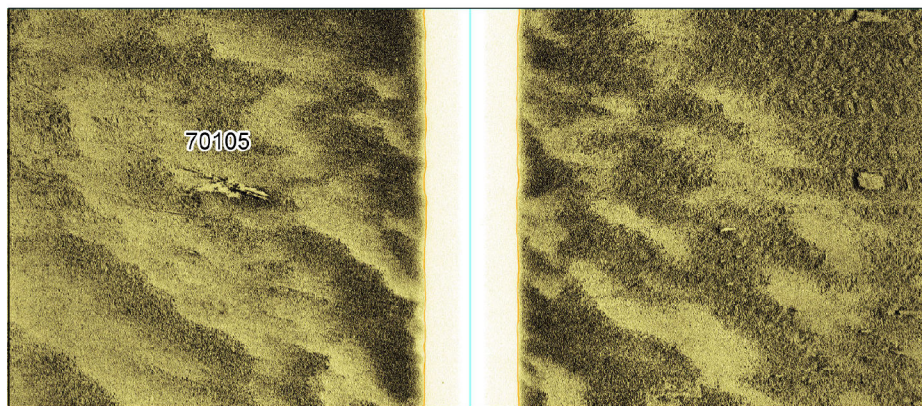


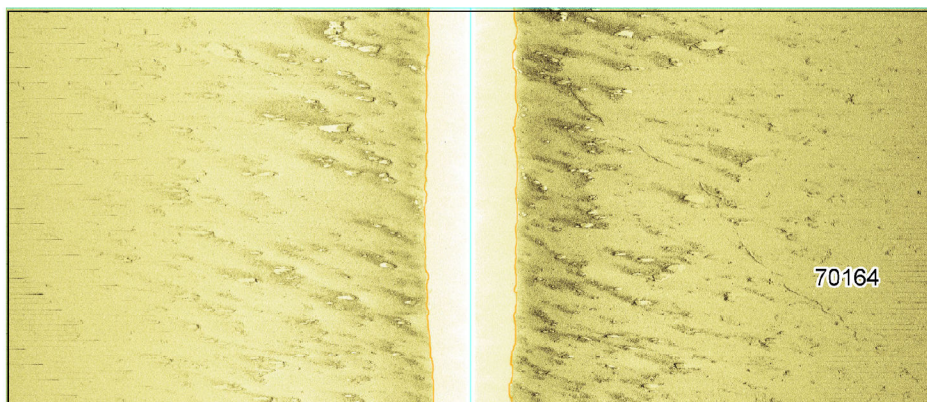
Charts from MarineFIND.co.uk © Crown Copyright 2018. All rights reserved. Licence No. EK001-0582-MF0050. Contains Ordnance Survey data © Crown copyright and database right 2018.



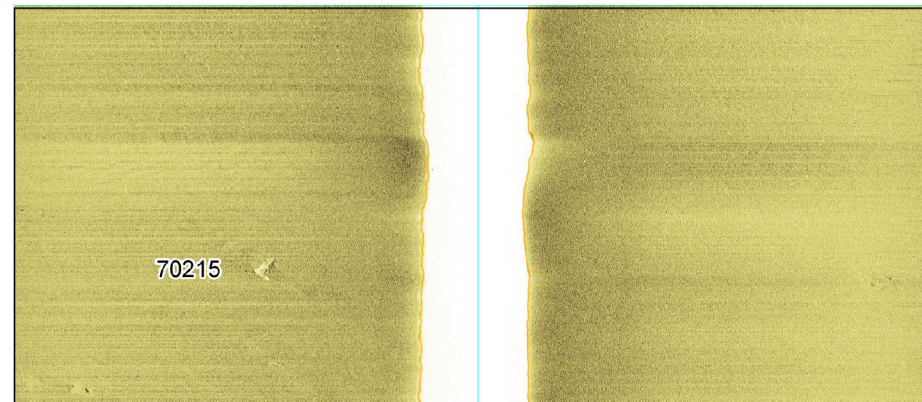
Magnetometer profile image of magnetic anomaly 70018, measuring 1295 nT



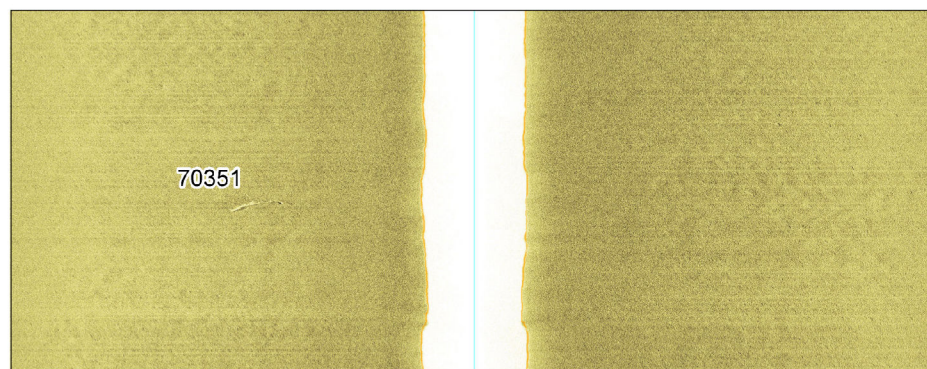
Sidescan sonar image at 50 m range of nonferrous debris field 70105, measuring 9 x 5.2 x 0.5 m



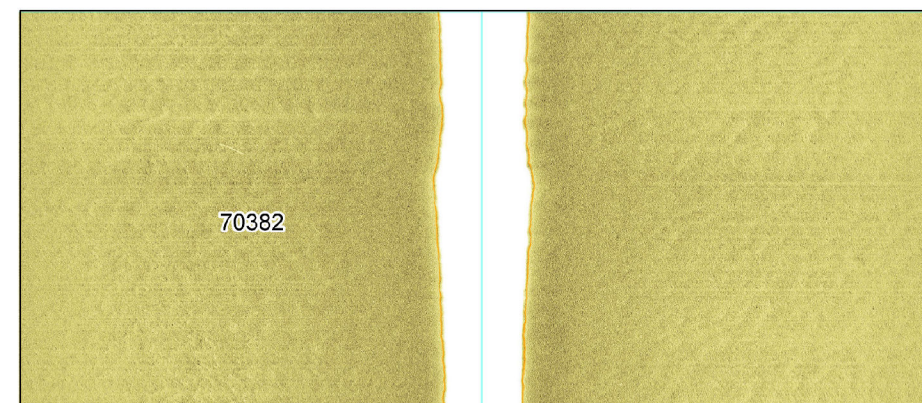
Sidescan sonar image at 80 m range of rope/chain item 70164, measuring 6134.6 x 0.4 x 0.1 m



Sidescan sonar image at 80 m range of nonferrous debris item 70215, measuring 7.8 x 0.8 x 0.6 m



Sidescan sonar image at 80 m range of nonferrous debris item 70351, measuring 10.7 x 0.8 x 0.1 m



Sidescan sonar image at 80 m range of linear bright reflector item 70382, measuring 6.1 x 0.8 m

**AQUIND Interconnector**

□ Marine Cable Corridor

--- UK European Economic Zone (EEZ)

● Data example

The Infrastructure Planning (Environmental Impact Assessment) Regulations 2017

REV	DATE	BY	DESCRIPTION	CHK	APP
03	07/01/2019	KL	FINAL	SS	AB
02	12/11/2018	KL	SECOND DRAFT	SS	AB
01	01/11/2018	KL	FIRST DRAFT	SS	AB

DRAWING STATUS:

FINAL



Head Office: Portway House, Old Sarum Park,  
Salisbury, Wiltshire, UK SP4 6EB  
www.wessexarch.co.uk

CLIENT:



PROJECT:

AQUIND Interconnector

TITLE:

Figure 14.7 Data Examples of  
Ferrous Seabed Features

SCALE AT A3 1:1,800,000	CHECKED: SS	APPROVED: AB
PROJECT NO: EN020022	DESIGNED: KL	DRAWN: KL
DRAWING NO: EN020022 – ES – 14.7		DATE: 22/08/2019
REV.NO. 03		

© WSP UK Ltd